

John Nash (1893 - 1977)



Artist Facts:

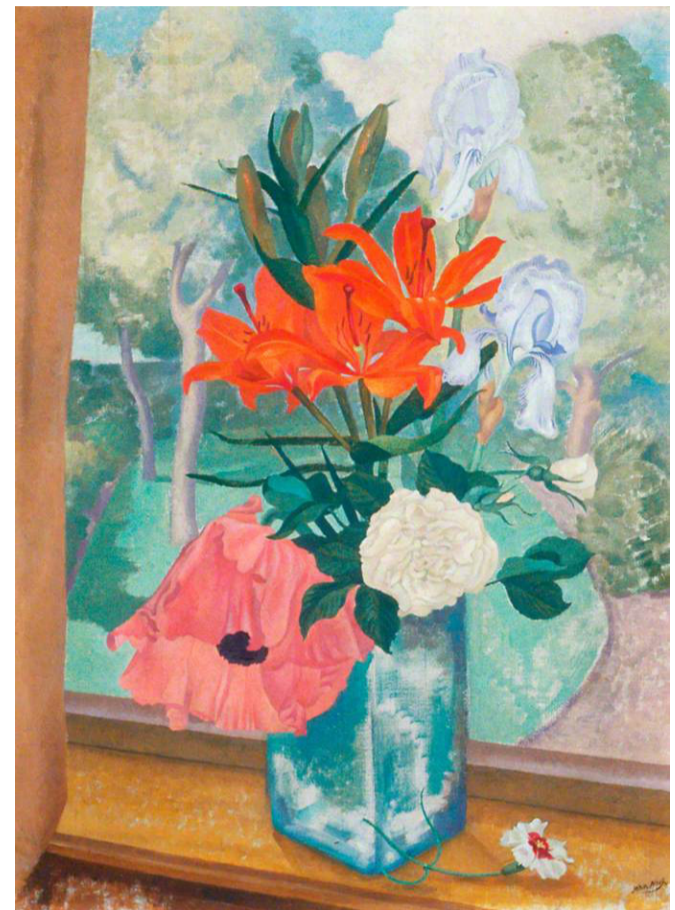
- John Nash was a British painter of landscapes and still-lives.
- As a self taught artist he experimented in watercolour and pencil and would later use oil paint.
- John's still-life paintings took inspiration from summer trips to the countryside.



Artwork title: Harebell
Date: 1977
Medium: Pencil and wash on paper

Artwork Facts:

- This pencil and wash sketch of a Harebell, a flowering plant joins the artist's two loves, gardening and art.
- After moving to a farm in Suffolk, John planted a collection of rare plants but also studied wild flowers.



Artwork title: Summer Flower Piece
Date: unknown
Medium: Oil on canvas



Artwork title: Wild Garden, Winter
Date: 1959
Medium: Watercolour on paper